



Warranty & product guide

**PLEASE READ THE ENCLOSED THOROUGHLY.
DO NOT DISCARD
IMPORTANT INFORMATION INSIDE!**

Thank You

The management and staff of Triangle Kitchen Ltd. would like to take this opportunity to thank you for your purchase and welcome you to our family. Our company has been committed to producing fine custom cabinetry and furniture since 1976 and our growth and success is founded on our customer service and satisfaction.

Please take a moment to familiarize yourself with your new cabinets by reviewing the attached information on product warranty and the basics in cabinet care and use. We hope that you will be pleased with your new cabinets and that we will be at your service for many years to come.

Table of Content

Thank You	3
Limited Lifetime Warranty	4-5
Nature of Wood	6-7
Cabinetry - Care & Maintenance	8-9
Door Hinge Adjustments	10
Bi-Fold Hinge Adjustments	10
CLIP top BLUMOTION - Deactivation / Activation	11
Metabox Drawer System Adjustments	12
Dovetail / Melamine Drawer System Adjustments	13
Legrabox Drawer System Adjustments	14-15
AVENTOS Lift Systems	16
EASY ASSEMBLY app	17



Limited Lifetime Warranty

This warranty is in lieu of any and all other warranties, expressed or implied by Triangle Kitchen Ltd., Triangle Kitchen Ltd., Associates and/or others and is only valid in Canada and in the United States of America.

Triangle Kitchen Ltd., (Triangle) provides a "Limited Lifetime Warranty" on all our manufactured products to the original consumer purchaser of our products, for as long as they own their home where our products are initially installed. Our products will be free from defects in material and workmanship under normal home use.

Triangle's coverage terms provide a 5-year warranty on the cabinet construction and 5-years on the cabinet finishes.

Lifetime warranty coverage is applied to hardwares, as described below under; Customer hardware options.

All warranty coverage commence on the shipping date.

Triangle's limited warranty obligation under these terms and conditions shall be limited to the repair or replacement of any part or parts of our products which may prove to be defective under normal home use within the warranty periods detailed above and which our authorized service technician examination shall disclose to our satisfaction to be defective. Our obligation under this Limited Lifetime Warranty or otherwise with respect to the products supplied by Triangle is subject to Triangle having been provided a reasonable opportunity to inspect and repair/or replace the alleged defective products or workmanship. Triangle shall not be responsible for any indirect, consequential or any other form of damage or loss, which is not expressly and specifically covered by this Triangle Kitchen Limited Warranty.

This limited lifetime warranty is only valid if an authorized Triangle technician and/or an authorized Triangle dealer/reseller installed the cabinetry. Triangle's Limited Lifetime Warranty is not transferable.

Customer hardware options (specific warranty coverage and terms)

- Should the cabinets purchased be installed using the « BLUM » hardware, a lifetime warranty on the parts is included with this system.
- Should the cabinets purchased be installed using a brand of hardware other than BLUM, the 5-year warranty detailed herein will apply.

(See installation specifications and/or bill of sale for better understanding of system purchased with cabinets).

EXCLUSIONS

1. This limited warranty shall become void:
 - a. If the cabinets are damaged by misuse, abuse, negligence, alterations, acts of God, excessive exposure to direct sunlight, exposure to moisture or exposure to extreme temperatures.
 - b. If improper installation or handling was conducted.
 - c. If cabinets and/or it's parts become damaged as a result of storage by others.
2. This limited warranty does not apply to the mellowing and aging of wood products due to photo degradation to its finished appearance (i.e.; the effect of natural and artificial light to woods and finishes). Variation in the wood grain or color; fading or visible cracking around joint areas.
3. This limited warranty does not cover countertops, appliances, plumbing fixtures or any and all products not manufactured and supplied by Triangle.
4. This limited warranty does not cover costs and expenses pertaining to, labour; incurred in removing or installing, product transportation of our products or related components, nor shipping costs.

Limited Lifetime Warranty

5. This limited warranty does not cover failure of the sealant or wood components caused by excessive humidity or condensation.
6. This limited warranty shall not apply to the effects of normal wear and tear.

Without limiting the generality of the foregoing, we make no warranty whatsoever with respect to accessories or parts not supplied or manufactured by us.

Triangle reserves the right to alter product design, specifications and materials without prior notification or obligation to incorporate such changes to products previously manufactured. If a warranty claim is filed after a style is no longer being manufactured by Triangle, Triangle reserves the right to fully satisfy its obligations under this limited warranty by either replacing the affected component with a new component of the same style, or if Triangle no longer has any more components of the same style, with a style supplied by Triangle which is the most similar to the affected component. If components are replaced, Triangle Kitchen does not guarantee that the finish of these replacements will match exactly the finish of any surrounding components. This is due to the changes that occur during the wood's natural aging process, affecting its color and grain.

This limited warranty gives you specific legal rights and you may have other rights, which vary from province to province and state to state. Some provinces or states may not allow the exclusion or limitation of consequential or incidental damages, so the above limitations or exclusions may not apply to you.

CLAIM PROCEDURES

1. To file a limited warranty claim, contact your locally authorized Triangle dealer or reseller; who will arrange for an inspection of our products.
2. Once an appointment date and time is confirmed by all parties, the Triangle dealer agrees to be present upon the authorized technicians' arrival. Should the dealer or customer wish to cancel appointment, they must give 2 full days notice. Triangle reserves the right to charge dealers for time lost in the event the customer is not present for the appointment. Technician posted rates will apply.
3. Proof of purchase is required to obtain benefits from this Limited Lifetime Warranty.
4. The authorized dealer or reseller will obtain the information necessary to make a claim decision and forward such information in writing to Triangle Kitchen, for action on the claim.
5. Limited Warranty claims must include a complete description of how the defect occurred.
6. If you have difficulty obtaining assistance, please write/e-mail Triangle Kitchen at the following address:

Triangle Kitchen Ltd.

679 Babin Street
Dieppe, New Brunswick E1A 5M7

Toll Free: 1-800-563-5482

Tel: (506) 858-5855

Fax: (506) 859-1817

OR

E-mail us at: orders@trianglekitchen.com

IMPORTANT DISCLAIMER

THIS LIMITED WARRANTY IS IN LIEU OF ALL OTHER WARRANTIES AND CONDITIONS, EXPRESS OR IMPLIED, INCLUDING ANY IMPLIED WARRANTIES AND CONDITIONS OF MERCHANTABILITY AND FITNESS FOR A PARTICULAR PURPOSE OR USE AND OF ALL OTHER OBLIGATIONS OR LIABILITIES ON OUR PART. TRIANGLE NEITHER ASSUMES, NOR AUTHORIZES ANY OTHER PERSON, INCLUDING SALES REPRESENTATIVES, DEALERS AND/OR DISTRIBUTORS TO EXTEND OR ASSUME ANY OTHER WARRANTY, CONDITION OR LIABILITY IN CONNECTION WITH THE SALE OF TRIANGLE PRODUCTS. THE REPAIR OR REPLACEMENT OF DEFECTIVE PRODUCTS WILL BE THE PURCHASERS EXCLUSIVE REMEDY AND THE PURCHASER HEREBY WAIVES ALL RIGHTS OTHERWISE, INCLUDING, WITHOUT LIMITATION, ALL IMPLIED WARRANTIES AND CONDITIONS PROVIDED FOR IN THE SALE OF GOODS ACT (NEW BRUNSWICK) AND ALL CLAIMS AGAINST TRIANGLE KITCHEN FOR CONSEQUENTIAL OR INCIDENTAL DAMAGES.

Nature of Wood

Triangle Kitchen always prides themselves in using the finest grades of wood products available for your cabinetry. However, knowing more about the nature of wood can help you extend the life of your cabinets.

No two trees are alike (they are unique just like all of us)!

Wood is the natural fibrous-in-nature product of the trees. The characteristics and the arrangement of these fibrous cells affects the strength and stiffness and grain pattern of the wood. Due to the differences in natural color and grain, each piece of wood will react differently to the finishing materials used. While we can enhance the natural beauty of wood, it is nearly impossible to find two trees that are the same shape, color or age. For these reasons, some variances in color and grain pattern will be noticeable in your cabinetry or any other wooden products you may come across.

Wood is good

Throughout history, the unique characteristics and renewable abundance of wood have made it a natural material for homes and other structures, furniture, fine cabinetry, tools, vehicles, and decorative objects. Today, for the same reasons, wood is prized for a growing multitude of uses. This variety is a result of a spectrum of desirable physical characteristics or properties among the many species of wood available. In many cases, more than one property of wood is important to the end-product. For example, to select a wood species for a product, the value of appearance-type properties such as texture, grain pattern, or color, may be assessed against the influence of characteristics such as machinability, dimensional stability, or density.

The Golden Years

Wooden cabinetry naturally changes its appearance as it ages, deepening in luster and tone like a fine antique. Exposure to sunlight in your home may cause areas in your cabinets to change color faster than others. Window locations may increase the amount of direct sunlight and further speed up this process. All species react to this UV light, but some species like cherry wood or walnut react more dramatically it is part of its beauty.

Wood lives forever

Wood does not literally "live forever". What are trying to convey here, is that any solid wood or wood composite will expand or contract over time as moisture and climate conditions change. All species of wood react to variations in relative humidity levels, expanding when additional moisture is present in the air, and contracting during dry conditions. As wood exchanges moisture with air; the amount and direction of the exchange (gain or loss) depends on the relative humidity and temperature of the air and the current amount of moisture (water) in the wood.

Climate control and your cabinets

Our cabinetry is not waterproof, and even changes in weather will cause changes in wood, particularly during periods of high humidity or conversely during the winter months when heating is used and the air tends to be much dryer. This moisture relationship has an important influence on wood properties and performance of your wooden products.

We cannot warranty our product against wood movement and it is the homeowner's responsibility to ensure that relative humidity and climate levels are controlled. We recommend maintaining levels at approximately 45% relative humidity. Although extreme humidity or dryness of the air is not a good thing for any house, it is the variation in humidity that affects wood the most. The more drastic the variation the greater the wood will change shape or move (eg. Cold-Dry winter months Vs. Warm-humid summer months).

Nature of Wood

In some cases, cabinet doors may exhibit signs of warping, birch is especially susceptible to warping. We recommend giving any warped doors time (approx: 3-4 weeks) to acclimatize before requesting a warranty replacement as they will often eventually return to their original state.

Warping can also be compensated by adjusting the door, which have been specifically designed to ensure both ease and flexibility. (See blum hinge adjustment)

Excessive movement may cause cracks

Small cracks may develop during dry conditions, such as when your home is heated during the cold dry winter, and then almost disappear when humidity levels are restored in the warm-humid summer months. Painted wooden doors will often show signs of movement in the joints in the form of hairline cracks.

Cracks can also appear when water has been dripped onto cabinet doors placed below kitchen sinks or beneath bathroom vanities. Excessive force applied to the doors may also cause cracking.

Wood Species

Hard Maple

Maple is an ideal hardwood for living areas as it is extremely resilient with a streamlined appearance modulated by yellow, pink and light tan streaks that deepen when stained. Typically, straight-grained, maple panels offer greater uniformity than many other wood types, lending a clean, fresh appearance that is both warm and modern. The application of a darker stain on maple will soften the wood's natural complexity and should create a more uniform finish.

Red Oak

Oak is a deep open-grained wood that ranges in color from white and yellow to a rich red-brown. Occasionally streaked with black, green or yellow mineral deposits, the grain of red oak may form a characteristic sweeping arch pattern. The application of a stain on oak will accentuate the wood's natural complexity and create a more distinct grain.

Cherry Wood

Unstained cherry wood has pink and pale brown hues that are sometimes streaked with shades of white, green and gray. A rich hardwood that often contains delicate pin-knots, whorls and other figures, cherry is often used to make fine furniture. While all cherry wood deepens with age, lighter stain applications can be used to emphasize subtle color variations. The application of a darker stain on cherry will soften the wood's natural complexity and create a more uniform finish.

Knotty Pine

Knotty pine is named after its distinctive knots of varying sizes, which combined with mineral streaks and distinctive variations in colour, create a warm, fresh countrified finish that mellows and deepens over time. As a soft wood, knotty pine is more susceptible to dents and nicks than harder woods, and is well-suited to kitchen designs emphasizing a relaxed, live-in atmosphere. Cabinets finished in knotty pine will present a rustic, rural feel reminiscent of old farmhouses and log cabins, a perfect way to achieve warmth and character in a contemporary, updated kitchen.

Cabinetry - Care and Maintenance

Your new cabinetry has been crafted with the highest quality materials and finished to ensure a lifetime of enjoyment.

How to care for your kitchen?

Your new cabinetry has been crafted with the highest quality wood, industrial materials and finishes to ensure a lifetime of enjoyment. Cabinets are like fine furniture but with one big difference; they are generally installed in a kitchen or a bathroom, both rooms are hard-use environments. Your cabinetry therefore needs a high level of care and maintenance. If you are wondering what is best practice in caring for your kitchen, look no further, we have the instructions needed in this booklet and the tools needed in your kitchen care kit.

Heat and Humidity

Avoid placing kitchen appliances where heat is directed onto cabinet surfaces. Self-cleaning appliances often generate intense amounts of heat during cleaning cycles. Avoid damage to the finish of your cabinets by using a heat shield to deflect excessive heat from your oven. Other small appliances such as coffee machines, kettles, toasters and small ovens also generate intense heat and steam that can seriously damage your cabinets when placed directly under or close to these appliances.

Exposure to light (UV)

The ultraviolet light (UV) found in direct sunlight is amazingly powerful. UV will affect most materials and wood is no different. Although all our finishes have UV inhibitors to help minimize changes to cabinet finishes, over time the UV light will affect the color of your cabinets. Some people may wish to use window treatments that block direct sunlight exposure onto cabinets. The affect UV light has on wood, is most prevalent when the wood only has a clear natural finish on it. This is particularly true in woods such as Cherry Wood, Black Walnut and many tropical hardwoods. To minimize the change of color it is recommended to put a slight stain on the wood. It may be a bit darker than desired at the beginning but in most cases the variation of the stained wood, once exposed to the light, will be less apparent than a clear finish, which will also eventually darken (mellow). It is important to note that the effects of UV light are not limited to natural wood grains but also affect painted doors, PVC doors and many other materials as well.



Cabinetry - Care and Maintenance

Weight

We recommend that you periodically check to make sure that you are not placing too heavy a load on interior shelves and drawer bottoms, as overly heavy or unbalanced loads can shorten the life expectancy of mechanical parts. We use Blum hardware, which carries a lifetime warranty and is widely considered the best hardware in our industry. Having said this, they do have a maximum weight rating, please check our website to find out what is the weight rating of the hardware you have chosen as there are many choices available, if you are unsure, please ask your dealer. Never overload your drawers or shelves as this may damage the hardware and result in serious injury. Never allow children to climb on cabinets or drawers as this may result in serious injury.

Choosing the right cleaning products

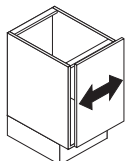
We provide a very high quality multi-purpose kitchen cleaner & degreaser (Eco-Clean by Triangle) in our Kitchen Care & Maintenance Kit. We recommend that you always use this Eco-Clean spray for cleaning of your kitchen cabinets. If for any reason, you have to use another product, we recommend the use of a high quality cleaning agent containing mild detergents and emulsifiers. Apply detergents to a clean microfiber cloth and do not leave cloths moistened with cleaning agent on cabinet surfaces for any length of time. We recommend not to apply cleaning agent directly onto the cabinet surface.

DO NOT USE The following products as they will void your warranty: It is best to avoid silicone cleaners. While silicone cleaners offer a high shine finish, over time the silicone will create a barrier that makes it almost impossible to refinish or touch up your cabinets when required. Waxes should also be avoided as regular use may result in a build-up of wax on the surface of your cabinets that may attract dirt and other pollutants in the air, resulting in streaks and a duller finish. Waxes can also contain grit that may damage the surface of your cabinets. We also highly suggest you not to clean your cabinets with cleaning products that contain ammonia, abrasive additives, or bleach.

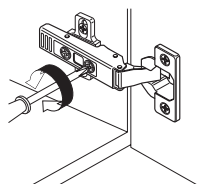
A microfiber cloth is included in our Kitchen Care & Maintenance Kit. The microfiber cloth will help you clean your cabinet without damaging it. Use the spray included in the kit with microfiber. We highly recommend you to avoid using scouring pads, steel wool and household dishcloths and sponges that may contain remnants of grease and harsh detergents as the use of these products will also void your warranty.



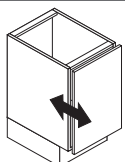
Side Adjustment



Turn front screw clockwise to increase door overlay counter-clockwise to decrease.
Range = $\frac{5}{32}$ " (4mm)

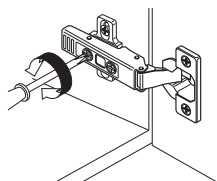


Depth Adjustment

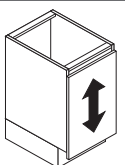


Rotate back screw to adjust door position.

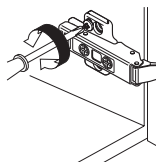
Range = $\frac{3}{16}$ " (5mm)



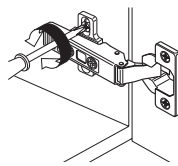
Height Adjustment



Loosen screw(s) on the mounting plate. Adjust door to position and tighten screws.
Range = $\frac{5}{32}$ " (4mm)

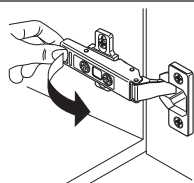


Two-piece mounting plate



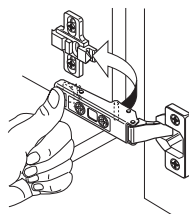
One-piece mounting plate

Door Removal and Installation



Release the lever under the hinge arm to remove.

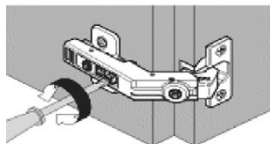
To reinstall, place the hinge on the mounting plate and push the back with finger pressure. The "CLIP" sound confirms a secure attachment.



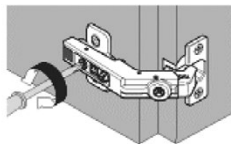
Bi-fold Hinge Adjustments

(Optional)

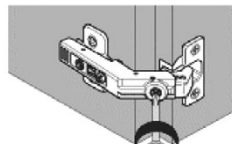
- Depending on the cabinet installation or changes in humidity levels in the home, it may be necessary to adjust the bi-fold doors (if applicable) for proper fit.
- The hinges should be set to allow just enough clearance for the doors to swing freely when folded.
- Try one or a combination of all 3 settings as shown in the diagrams below to adjust the doors to your preference.



Height adjustment



Side adjustment



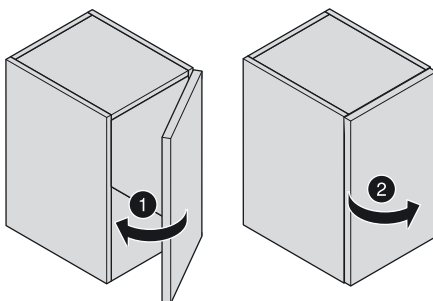
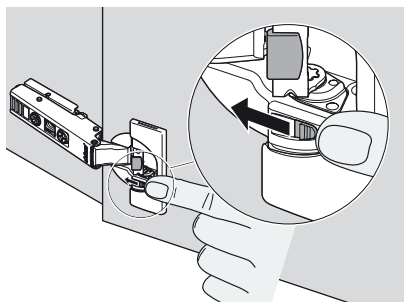
Depth adjustment

Note: Pozidrive screwdriver must be used for all above adjustments.

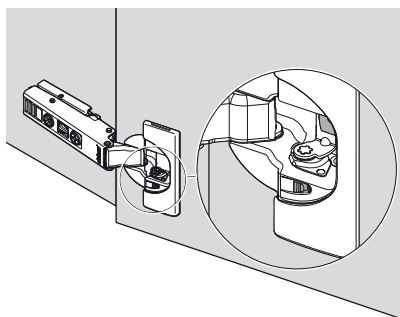


(see page 17 for details on the **blum® - EASY ASSEMBLY app**)

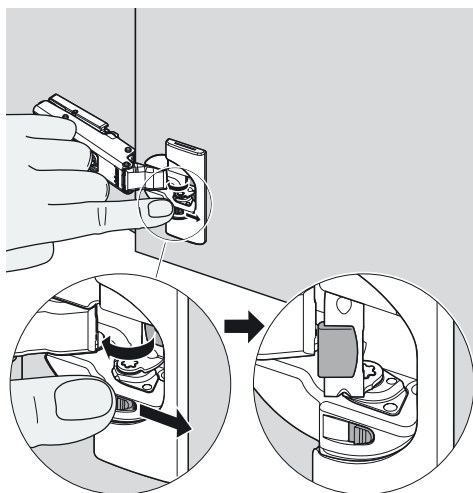
Deactivation



Smooth, whisper-soft closing action paired with an equally graceful appearance make the new BLUMotion hinges a standout for visual and tactile aesthetics. BLUM's engineers have managed to integrate a virtually invisible damping mechanism into the much-loved Clip Top hinge design, preserving all of the 3-way adjustability and clip-on ease of the original. No more rattling glasses and banging cabinet doors and no bulky apparatus on the outside of the hinge.



Activation



In addition, each hinge has a switch for turning the soft-close feature on or off: perfect for adjusting the speed of the close. Switching off one hinge on smaller, lighter doors allows the same soft-close speed throughout your kitchen.

(see page 17 for details on the **blum® - EASY ASSEMBLY app**)

Drawer Front Adjustment

If your cabinets are equipped with metabox drawer, the following drawings will provide the basic adjustments of the drawer fronts. To access these adjustments screws, slide off the plastic cover caps on either side. Once the adjustments are complete, simply slide the caps back over the screws.

Side Adjustment

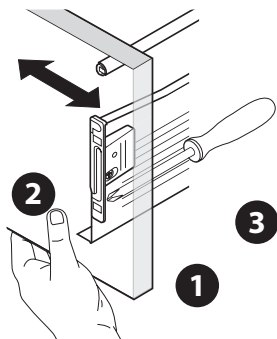


Diagram 1

Side adjustments (Diag 1)

- 1- Loosen the screws holding the bracket to the front
- 2- Adjust front to desired position
- 3- Tighten the screws (be careful not to over-tighten or threads will strip)

Height and Tilt Adjustment

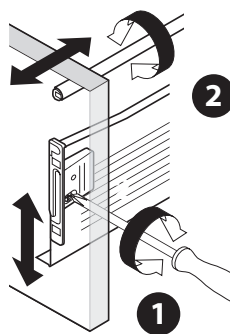


Diagram 2

Height and tilt adjustments (Diag 2)

- 1- Untighten the holding screw on side of bracket
- 2- Turn the cam screw inside the bracket either direction for height adjustment
- 3- Turn rail to adjust the tilt of the front (if equipped)
- 4- Tighten the holding screw once settings are complete



HELPFUL HINT! : If the drawer front will not adjust downwards when turning the cam screw counter clockwise, lightly tap the front down to dislodge the cam inside the brackets as you're turning the screw.

Note: The tilt adjustment described in diagram 2 may not be available on all drawers.

Note: Pozidrive screwdriver must be used for all above adjustments.

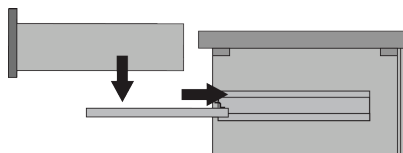


(see page 17 for details on the **blum® - EASY ASSEMBLY app**)

Drawers with Tandem Plus Blumotion Runner

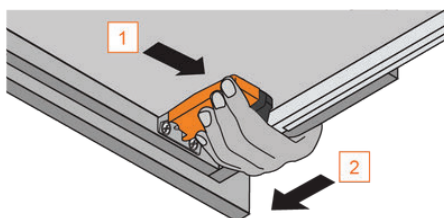
Drawer insertion

Extend the concealed runners fully.
Place the drawer on the runners and close.
The locking devices automatically engage with the runners. Make adjustments if necessary.



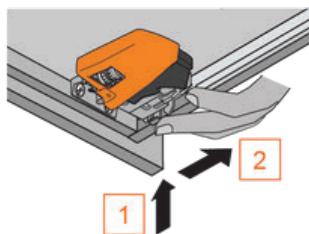
Height Adjustment

Press up on adjustment tab
Push towards back of drawer
Maximum 3 (1/8") rise of drawer front
(tool-free)



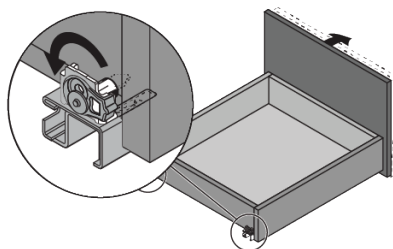
Drawer Removal

Squeeze orange handles on locking devices
Pull drawer straight out and up



Tilt Adjustment

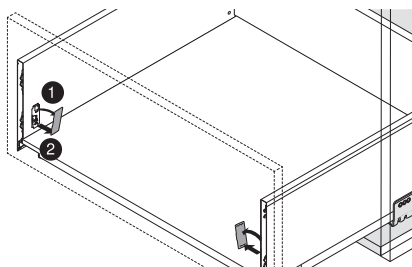
Rotate the tilt adjustment lever on the rear of each runner to lift the back of the drawer and tilt the top of the drawer front forward
Maximum 5 (3/16") rise of drawer back
(tool-free)



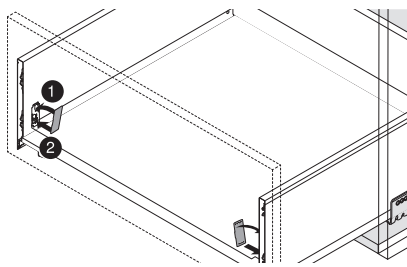
(see page 17 for details on the **blum® - EASY ASSEMBLY app**)

Cover Cap removal/installation

Removal



Installation

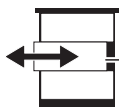


Height, side and tilt adjustments



1

Height adjustment
 ± 2 (3/32")



2

Side adjustment
 ± 1.5 (1/16")



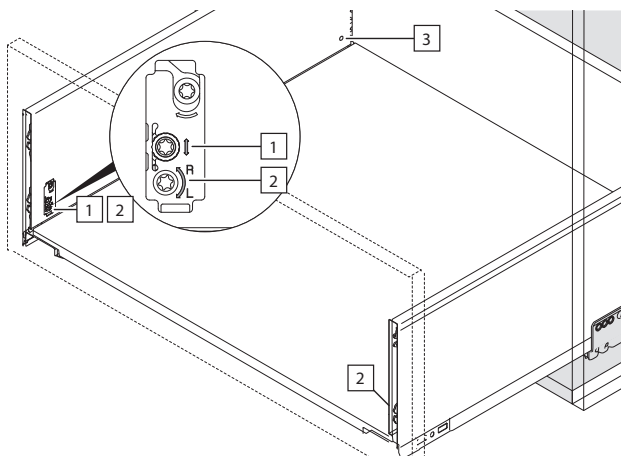
3

Tilt adjustment
M height + 1.5/-0.5 (1/16"/1/32")
C/F height ± 1.5 (1/16")

Height adjustment – Turn the adjustment screw clockwise to raise or lower the drawer front.

Side adjustment – Turn adjustment screw towards the **L** to move drawer front left.
Turn adjustment screw towards the **R** to move drawer front right.

Tilt adjustment – To increase the drawer front gap, turn the adjustment screw clockwise, to decrease turn adjustment screw counterclockwise.



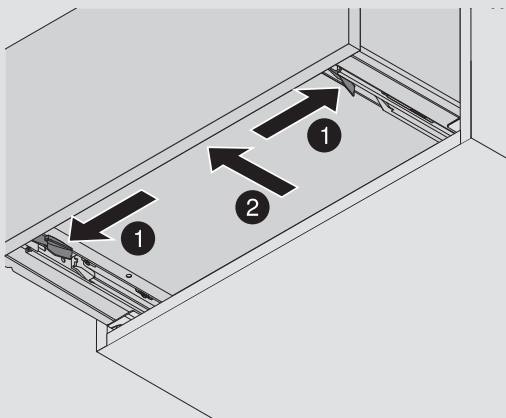
Note: T20 Torx screwdriver must be used for all above adjustments.



(see page 17 for details on the **blum® - EASY ASSEMBLY app**)

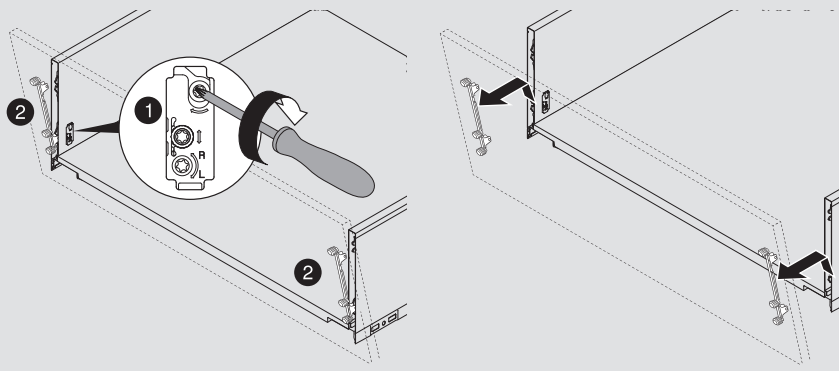
Drawer removal

Pull drawer forward to reveal locking devices. Squeeze triggers on locking device and lift drawer box off of runners.



Drawer front adjustment

Turn adjustment screw to release front fixing bracket. Lift drawer front away from drawer box.



Note: T20 Torx screwdriver must be used for all above adjustments.



(see page 17 for details on the **blum® - EASY ASSEMBLY app**)

AVENTOS Lift Systems



For full details on assembly and adjustments of the AVENTOS Lift Systems.

Download the free app for Android and iOS smartphones and tablets now.

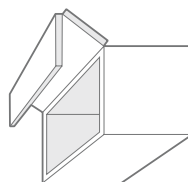
(see following page 17 for details.)



AVENTOS HF

AVENTOS HF

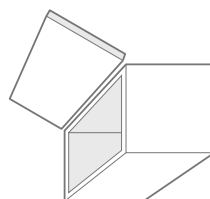
Bi-fold lift system. The two-part front folds up



AVENTOS HS

AVENTOS HS

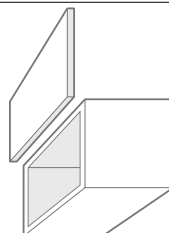
Stay lift. The front pivots up



AVENTOS HL

AVENTOS HL

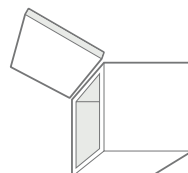
Lift up. The front lifts up parallel to the cabinet



AVENTOS HK & HK-S

AVENTOS HK & HK-S

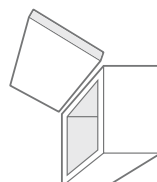
Small stay lift. The front pivots up



AVENTOS HK-XS

AVENTOS HK-XS

Very small stay lift. The front pivots up



*(see page 17 for details on the **blum® - EASY ASSEMBLY app**)*

EASY ASSEMBLY app

The digital tool for your assembly and adjustments



The **EASY ASSEMBLY app** has the answer to all your assembly-related questions, including safe installation and precise adjustment of Blum fittings. Are you trying to work out the best adjustment for a gap layout? Taking practical to a new level, the app ensures that everything you need to know about assembly is up to date and always at hand on your mobile device, saving time and ensuring that assembly of our premium furniture is of the highest quality.

INTERACTIVE

Interactive applications, such as augmented reality, provide virtual support when it comes to determining fitting positions and making adjustments.

CLEAR

Handy assembly videos individually demonstrate each work step, clearly showing the adjustment options in detail.

COMPLETE

The **EASY ASSEMBLY app** includes all of the Blum installation instructions, arranged by product group.

Download the free app for Android and iOS smartphones and tablets now.

Blum EASY ASSEMBLY app for iOS



Blum EASY ASSEMBLY app for Android



This image shows a single sheet of white paper with horizontal ruling lines. The lines are evenly spaced and run across the width of the page. There are no margins, text, or other markings on the paper.

This image shows a single sheet of white paper with horizontal ruling lines. The lines are evenly spaced and run across the width of the page. There are no margins, text, or other markings on the paper.



CREDITS: Cover, Page 8, Page 9 and Back: Design by: Filo+, Illustration on Page 3 by Timeless Designs Inc.



Triangle Kitchen Ltd.

679 Babin Street, Dieppe, New Brunswick E1A 5M7
Toll Free: 1-800-563-5482 • Tel: (506) 858-5855 • Fax: (506) 859-1817
E-mail: orders@trianglekitchen.com

www.TriangleKitchen.com